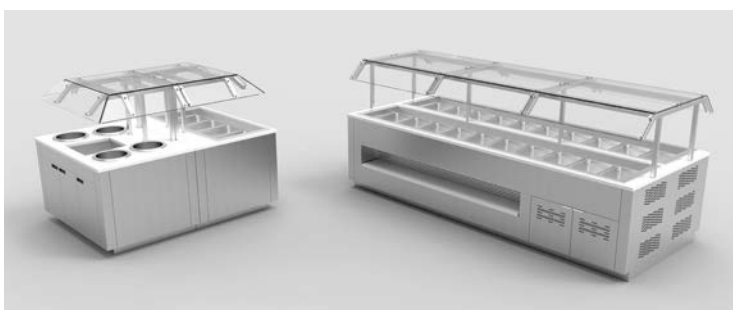


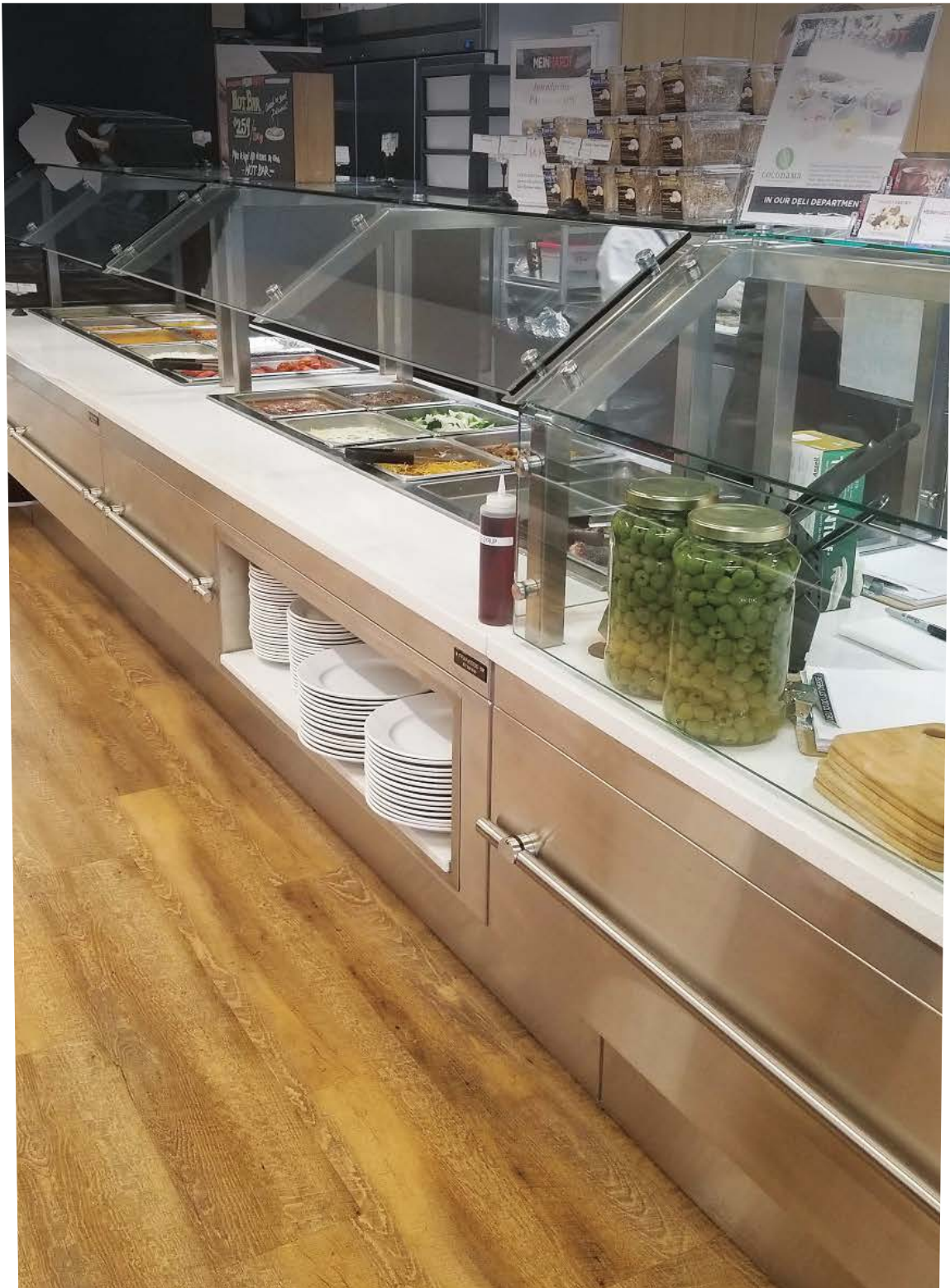


2020



WE SUPPORT  
OUR PARTNERS





**ARCHITECTURAL IN LINE SELF SERVE**

**[WWW.FRANESSE.CA](http://WWW.FRANESSE.CA)**



# FOOD EQUIPMENT CATALOGUE 2020

## ARCHITECTURAL SERIES ..... 3

DOUBLE ISLAND.....	4
SINGLE ISLAND.....	4
IN LINE FULL SERVE .....	5
IN LINE SELF SERVE .....	5

## PRINCIPAL SERIES..... 6

DOUBLE ISLAND.....	7
SINGLE ISLAND.....	7
IN LINE FULL SERVE .....	8
IN LINE SELF SERVE .....	8

## STANDARD SERIES ..... 9

OCTOGONAL.....	10
CHICKEN WING SERVER .....	10
SOUP STATION .....	11-12
CHICKEN WARMER LFG 72" .....	13
CHICKEN WARMER LFG 48" .....	13
CHICKEN WARMER LFG - 3668-2T .....	13
CHICKEN WARMER LFG - 3696-IL-3T .....	13
THREE TIER ISLAND .....	14
TACO STATION .....	14
SANDWICH PREP STATION.....	15
MEXICAN STATION .....	15

## SEAFOOD CASES SERIES ..... 16

STRAIGHT REFRIGERATED CASE .....	17
CURVE ICE DISPLAY .....	17
SEAFOOD DISPLAY WITH FRONT MERCHANDISER .....	18
ISLAND SEAFOOD DISPLAY .....	18
SEAFOOD CASE WITH ICE BIN .....	19
MOBILE ANGLED UNIT .....	19
MULTI-STEP SEAFOOD SALAD CASE .....	20
SEAFOOD CASE WITH WRAP AROUND ICE BIN .....	20



FRANESSE DP has been offering turnkey merchandising solutions to it's Supermarket, Food Retailing and Institutional customers for close to 75 years. We have successfully designed unique and dynamic equipment for multiple sales channels. We invite you to challenge our **team and experience** first hand our level of "Commitment" and "Partnership".

- Franesse DP welcomes **Custom Projects** which integrate **customer specific dimensions and needs**.
- All of our Food Equipment is manufactured using **304 Stainless Steel**.
- Our products incorporate **3/8" Tempered Glass**. We do not use plastics!
- Our Design Department provides **CAD Drawings** for approval prior to manufacturing.
- Franesse DP can deliver both **Hot and Cold Solutions** according to customer needs.
- Our manufacturing can deliver **Remote and Self Contained** solutions according to customer needs.
- We offer **Powder Coated or Cladded Solutions** for customers wishing to incorporate colours/textures.
- **LED Lights and Heat Lamps** can be incorporated into all designs.
- All **Pans and Dividers** are **Included** in our prices.
- All of our equipment meets **NSF** standards.

# ARCHITECTURAL *SERIES*

## DOUBLE ISLAND



- Condiment Stations can be incorporated on both sides.
- LED lights or an overhead warmer are available upon request.

## SINGLE ISLAND *WITH QUARTZ TOP AND SHELF*



- Condiment Stations can be incorporated on both sides.
- LED lights or an overhead warmer are available upon request.

## IN LINE FULL SERVE *WITH QUARTZ TOP*



- Powder Coated base unit.
- Diamond shape rail.

## IN LINE SELF SERVE



- 304 Stainless Steel base and top.
- Two inch square tubing.

# PRINCIPAL *SERIES*



## DOUBLE ISLAND *WITH SIDE EXTENSION*



- Sliding glass for easy access and merchandising.
- Cabinet side extension sized to customer request.

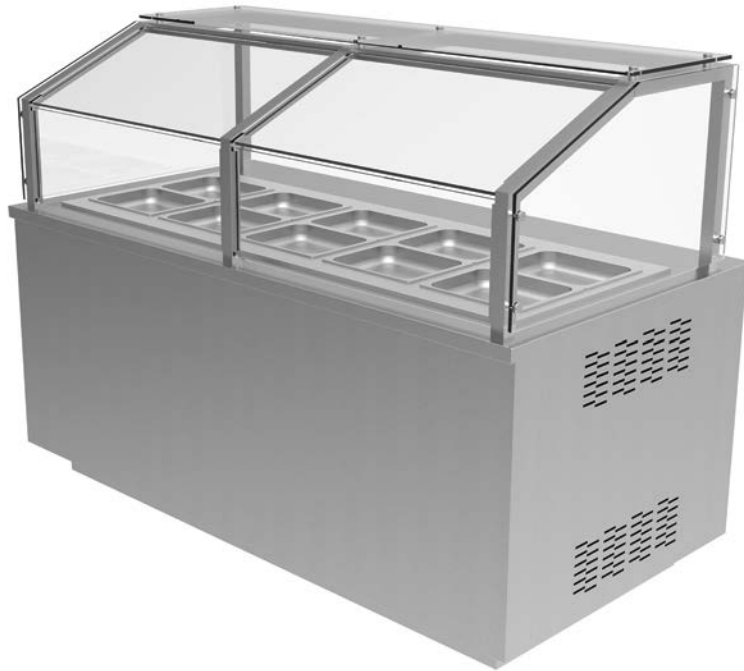
## SINGLE ISLAND



- Heat lamp or LED lighting available.
- Sliding glass for easy cleaning and access.

## PRINCIPAL

### IN LINE FULL SERVE



- 3/8" tempered glass.
- 304 Stainless Steel base and top.

### IN LINE SELF SERVE



- Flip up glass for easy cleaning and reloading.
- 3/8" tempered glass.

# **STANDARD** *SERIES*

## STANDARD

### OCTOGONAL



- Condiment layouts as per customer design.
- Flip up glass available.

### CHICKEN WING SERVER



- Flip up glass for easy restocking and cleaning.
- Heat lamp to ensure temperature maintenance.

## SOUP STATION WITH BLACK QUARTZ TOP



- Quartz top and stainless steel body.
- Layouts and condiments as per customer request.

## SOUP STATION WITH GREY SHADES



- Contrasting Quartz Accents.
- Traditional or Induction Wells.

## SOUP STATION WOOD BASE WITH BROWN TOP



- Woodgrain powder-coated base.
- Different quartz options available.

## SOUP STATION WOOD BASE WITH BROWN TOP



- Built to measure.
- Stainless steel body.



## STANDARD

### SOUP STATION *CHERRY BASE WITH BLACK TOP*



- Powder-coated stainless steel body.
- Layouts and condiments as per customer request.

### SOUP STATION 2



- Quartz top and shelf.
- Standard or induction heating wells.

### SOUP STATION *WITH BLACK AND ALUMINUM FRONT*



- Built-in cup dispensers.
- Powder-coated base with aluminum accents.

### SOUP STATION *WITH BLACK FRONT*



- Traditional or Induction Wells.
- Built to measure.

## CHICKEN WARMER LFG 72"



- Available with or without glass.
- Maximum 48 chicken capacity.
- Individual heat control for each shelf.

## CHICKEN WARMER LFG 48"



- Maximum 30 chicken capacity.
- Individual heat control for each shelf.
- Available with or without glass.

## CHICKEN WARMER LFG - 3668-2T



- Wider base and two-tier design.
- Temperature factory set for maximal performance.

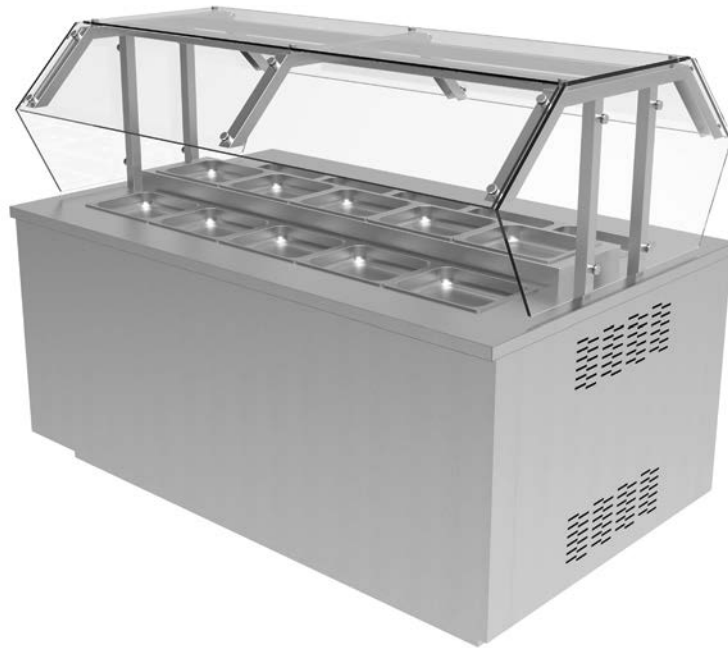
## CHICKEN WARMER LFG - 3696-IL-3T



- Inline 3 tier warmer.
- Mirror sliding door for easy replenishment.

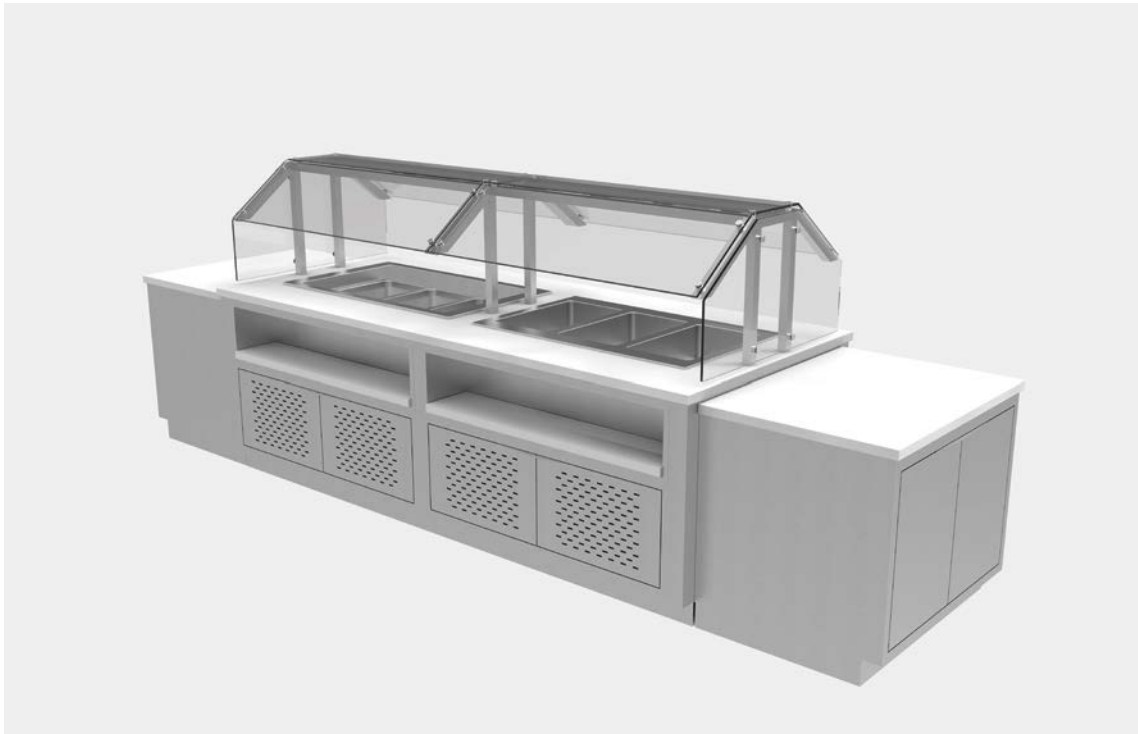
## STANDARD

### THREE TIER ISLAND



- Flip up glass available.
- Condiment side panels available.

### TACO STATION



- Hot and Cold wells incorporated into single unit.
- Quartz tops and shelves.

## SANDWICH PREP STATION



- Available with or without glass top.
- Hot wells can be incorporated.

## MEXICAN STATION



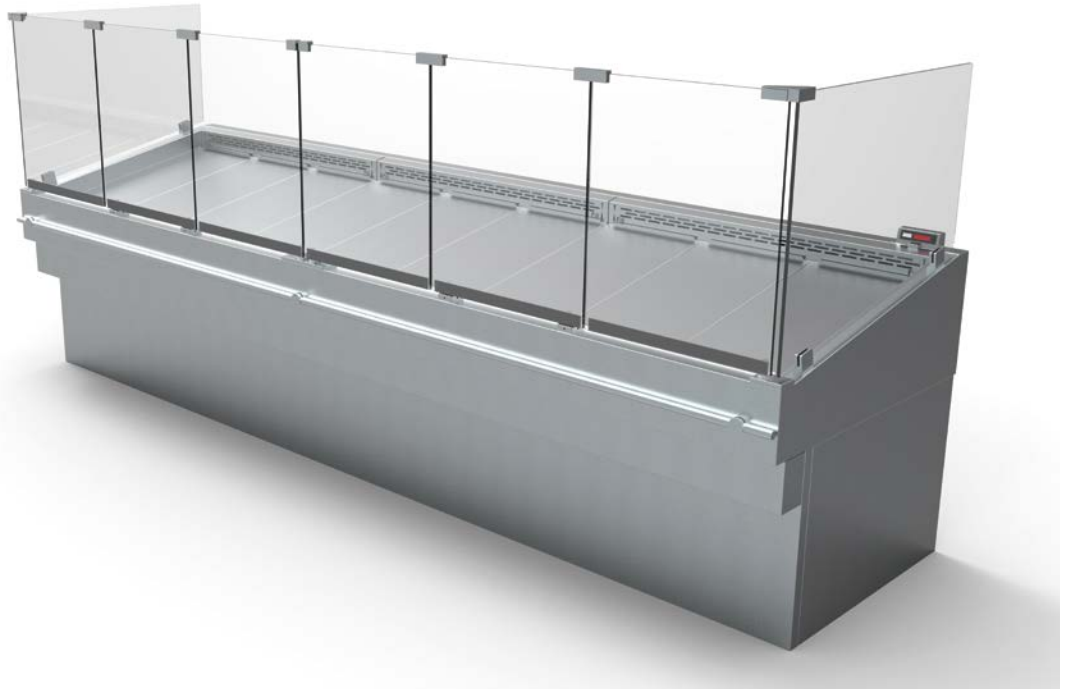
- Hot and Cold wells incorporated into single unit.
- Available with or without glass top.

# SEAFOOD CASES

## *SERIES*

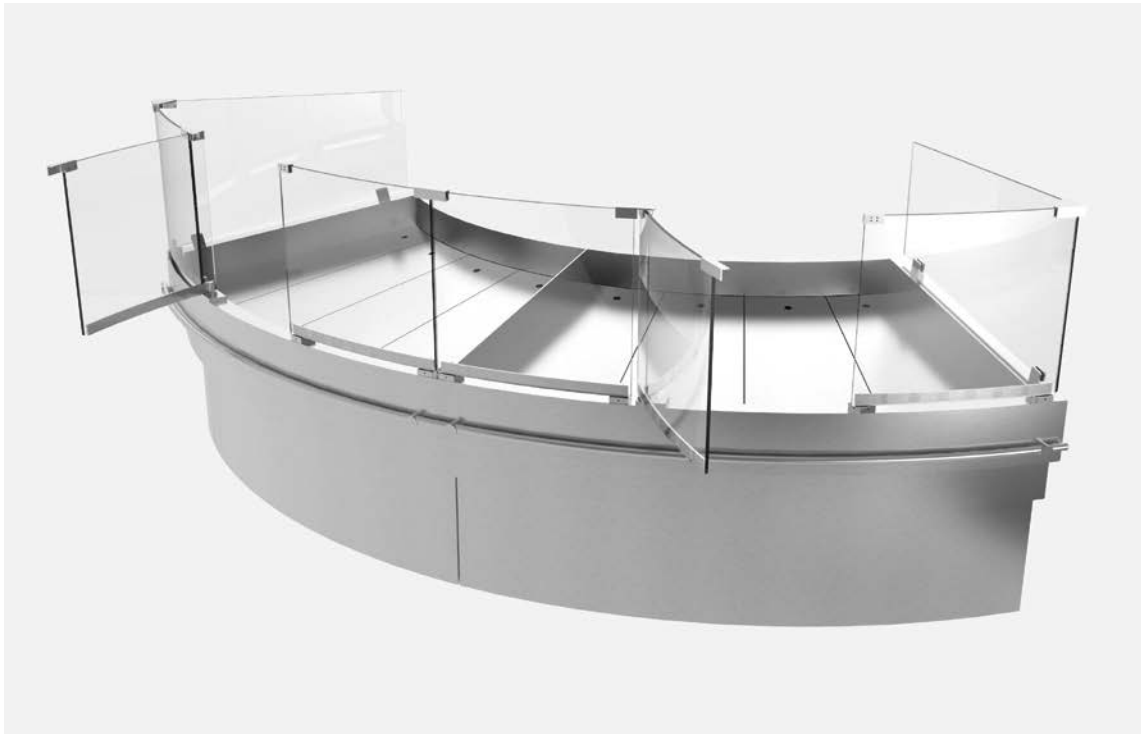


## STRAIGHT REFRIGERATED CASE



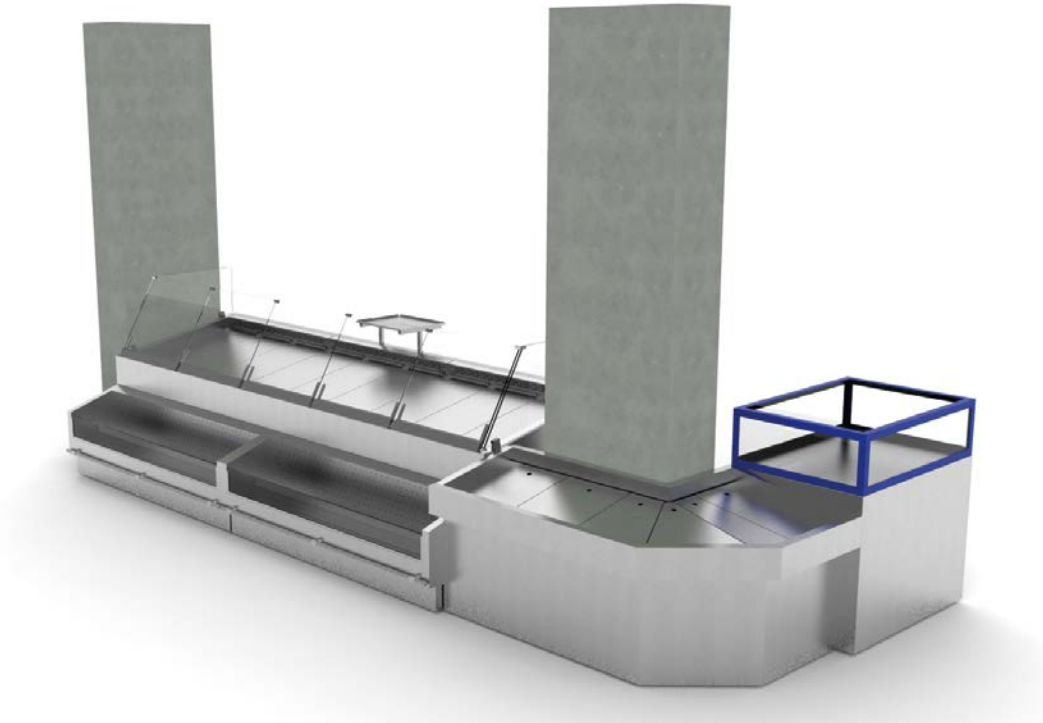
- Swinging doors available.
- All stainless construction.

## CURVED ICE DISPLAY



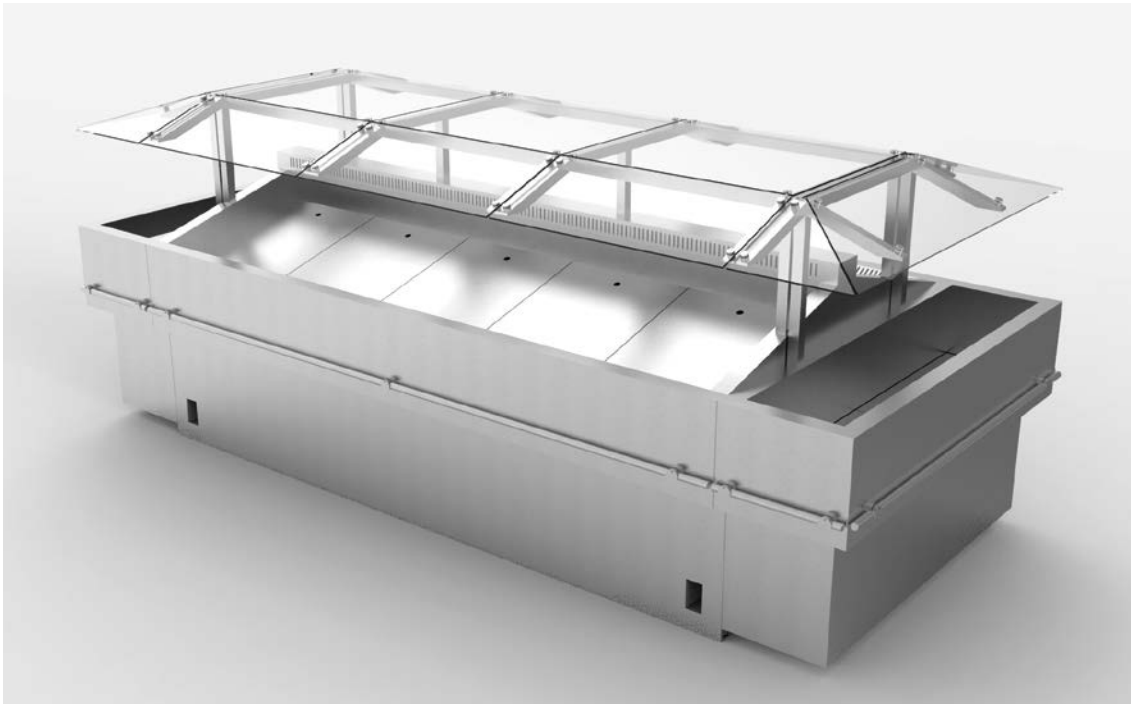
- Built to be leakproof.
- Individual drains per section.

### SEAFOOD DISPLAY WITH FRONT MERCHANDISER



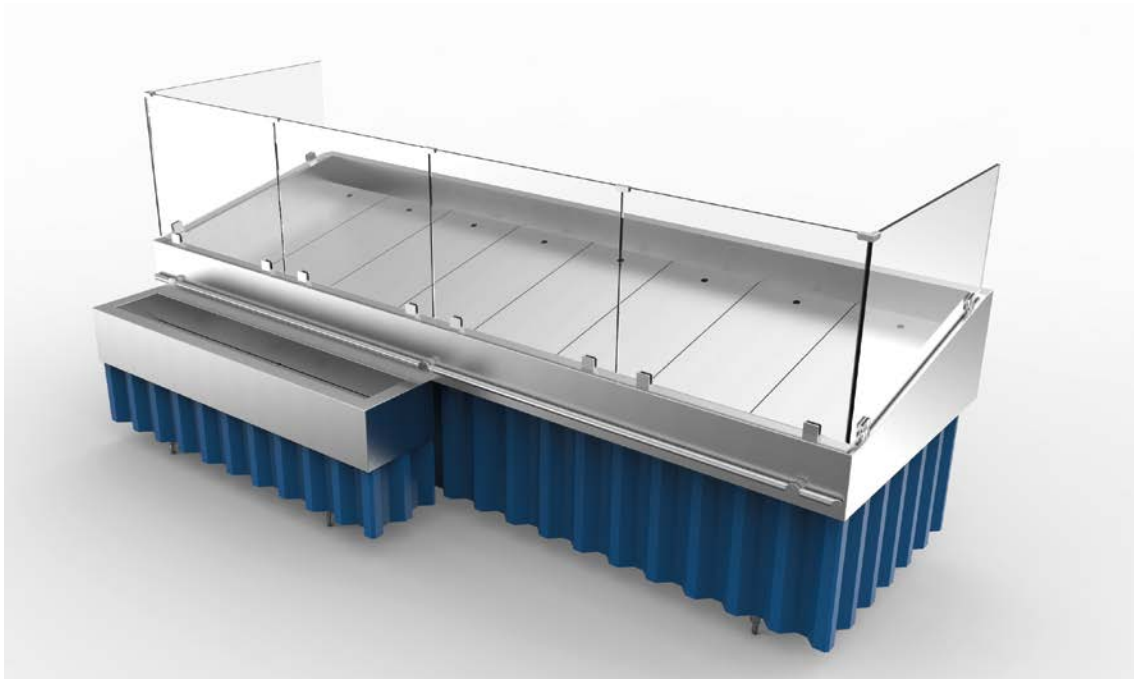
- Refrigerated and passive sections.
- Integrated lobster tank.

### ISLAND SEAFOOD DISPLAY



- Passive end caps.
- Remote or self-contained available.

## SEAFOOD CASE WITH ICE BIN



- Colored corrugated metal skirt.
- Removable ice bin.

## MOBILE ANGLED UNIT



- 0, 10, 20 and 30 degree angles.
- Hydraulic assistance for easy manipulation.



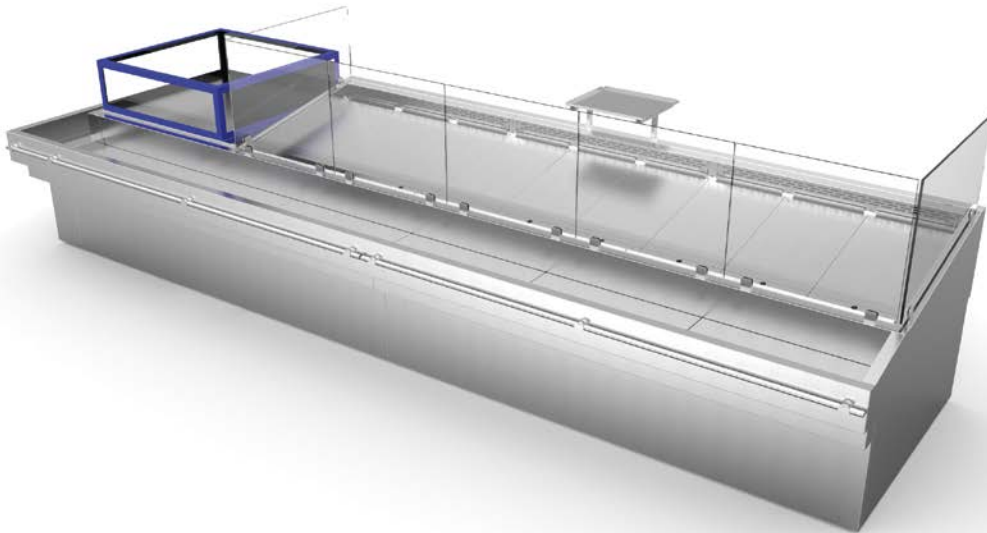
- Unit in flat position.

### MULTI-STEP SEAFOOD SALAD CASE



- All Stainless Steel Construction.
- Refrigerated with dry mist.

### SEAFOOD CASE WITH WRAP AROUND ICE BIN



- Wrap around passive section with drains.
- Integrated lobster tank.

## NOTES

✧ FRANCESSE • DP

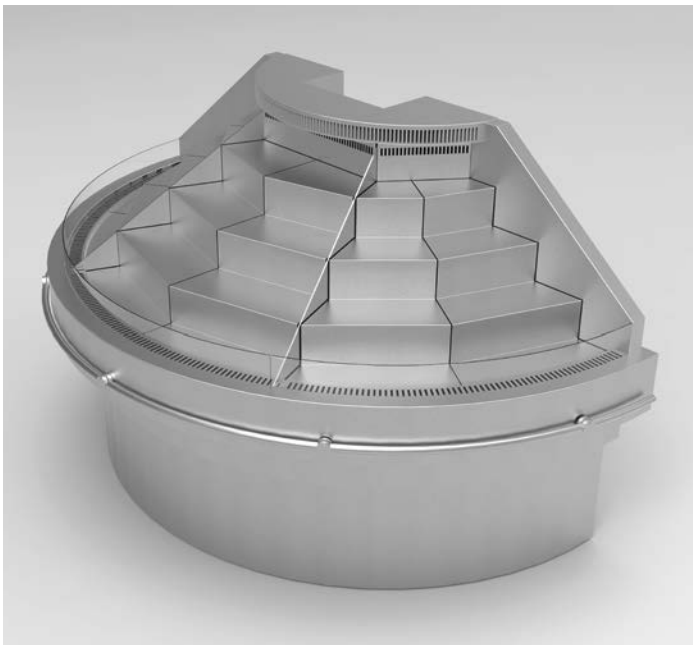
**1235 ST-Amour  
St-Laurent, QC  
H4S 1T4**

**T: 514-336-9191  
T: 1-877-336-9191  
F: 514-745-2959**

*To order:*  
*Email* info@franesse.ca  
*Phone* 514-336-9191 ext. 229  
*Fax* 514-745-2959

**www.franesse.ca**





1235 St. Amour  
St-Laurent, QC  
Canada  
H4S 1T4



514-336-9191  
1-877-336-9191  
514-745-2959  
info@franesse.ca



[www.franesse.ca](http://www.franesse.ca)